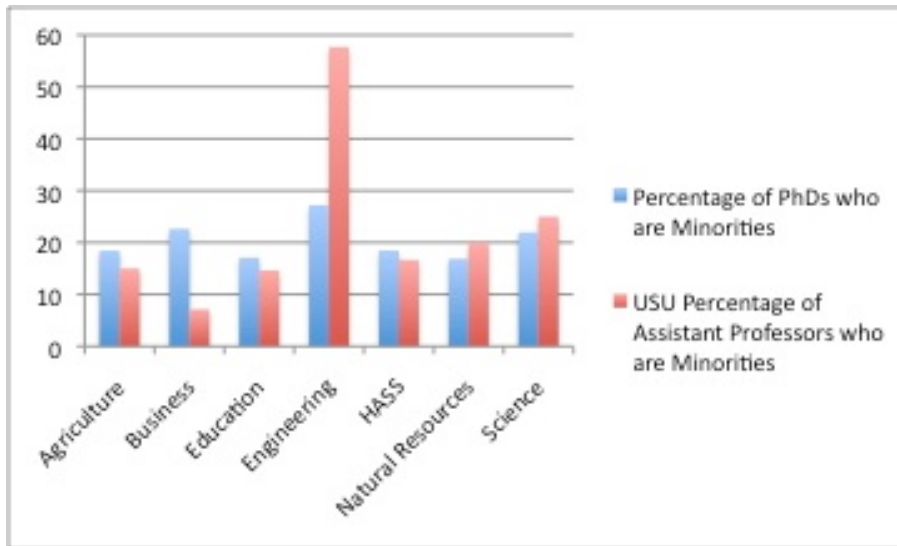
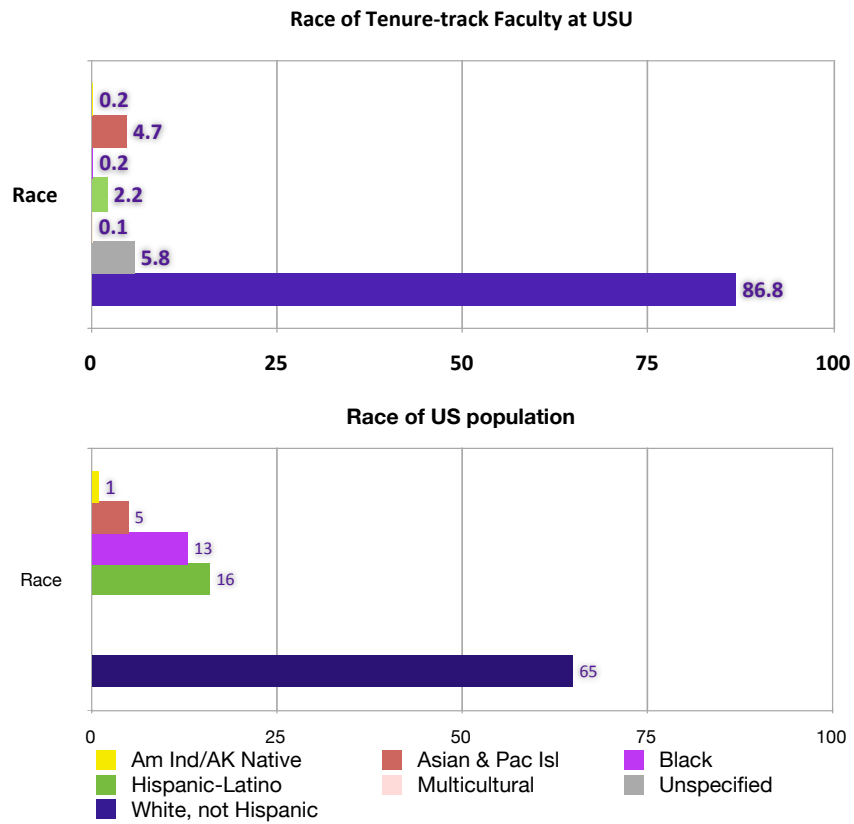


Appendix 4: Faculty Race by Tenure Status Compared with National Availability, 2006-2010

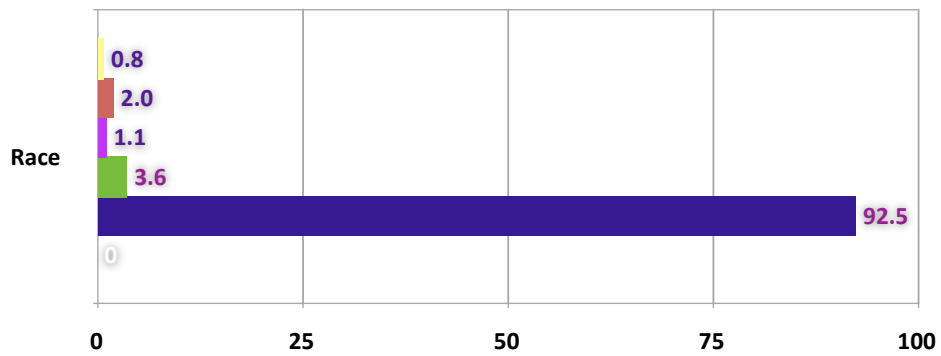


Note: These data represent the percentage of assistant professors within departments included in the colleges (from AAA) as compared to newly minted Ph.D.s in those same disciplines (obtained from AA/EO). AA/EO obtains their numbers from the Survey of Earned Doctorates and compiles it with U.S. Census data. This year the delivery of the data has been delayed. Unfortunately, these updated data are not available to report from the AA/EO office as of the deadline for submitting the annual report, however Stacy Sturgeon in the AA/EO office has indicated that there should not be much change in the availability numbers.

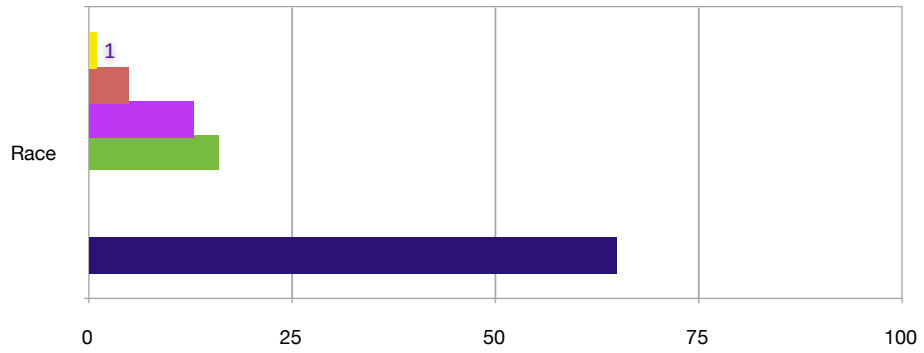
Appendix 5: Comparison of USU Faculty Racial Background to Other Demographic Groups



Race of USU student body

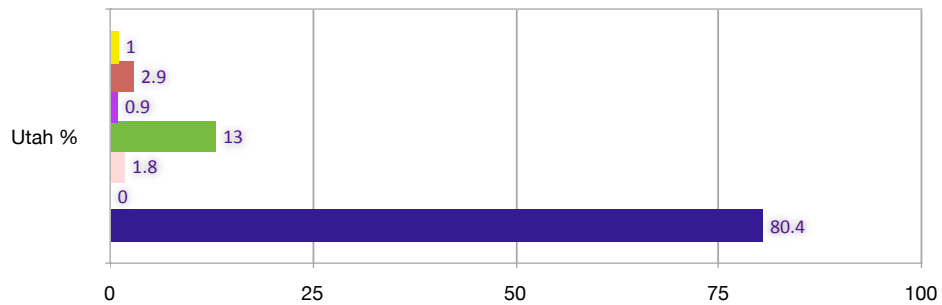


Race of US population



- Am Ind/AK Native
- Hispanic-Latino
- White, not Hispanic
- Asian & Pac Isl
- Multicultural
- Black
- Unspecified

Race in Utah, 2010 census data



Appendix 6: USU AAA Office Raw Data Detailing USU Faculty Race and Rank by College, 2006-2010 (pp. 16-18)

Appendix 7: USU AAA Office Raw Data Detailing USU Faculty Race by College (all ranks), 2006-2010 (pp. 19-21)